

Landmarks

by Lynne Belluscio

I've been spending quite a bit of time thumbing through the 1940 Book and thought I'd share some photos of places that have disappeared in the last 75 years. Some are long gone and forgotten, but a few might bring up some memories for some of you.



Jay's Auto Shop
Located just south of the Municipal Building on Clay Street Jay's was owned by Jay Serusa.

Mobilubrication
This gas station was on Main Street about where McDonald's is located now.



Lamps on the Main Street Bridge

The cement Main Street Bridge was built in 1909 and replaced the decrepit iron bridge. By the 1970s the cement bridge was in disrepair and was replaced by the present bridge.



Clock Tower

Ernest Woodward built his home and stables on East Main Street on the site of his father's home, Hill Bar. Ernest's estate was known as Poplar Lane. This clock tower was on the stables behind his home. It was removed and sold when his house was torn down in the 1950s.



Girl Scout Cabin

This limestone building was located on the west side of the Oatka Creek near Red Mill Road. Originally it was the office and powder house for the limestone quarry located nearby. It was donated to the Girl Scouts by Frank LaBounty. It fell into disrepair and was razed.



N.B. Keeney Warehouse

Nicholas Keeney and his son Calvin founded their partnership in 1872. In 1928 they merged with ASGROW. The LeRoy facility closed in 1950 and this warehouse on Lake Street was destroyed by fire.



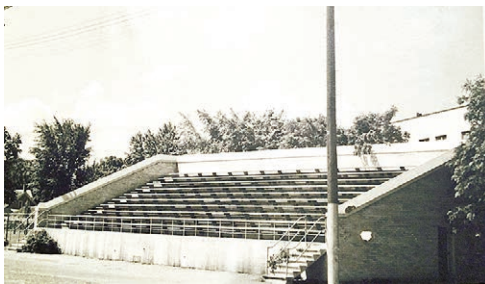
LeRoy Plow Company

Located off the west side of Lake Street, along the railroad tracks, LeRoy Plow was organized in 1899 and was owned by Thomas Larkin. It remained in business until the early 1950s.



Athletic Stadium Behind the School

The Woodward family donated funds for the "new" athletic field that was located behind the school off Trigon Park. It was in use until Hartwood Park was built.



Diner
LeRoy had two diners. This one was first located on West Main Street adjacent to the old Grove Motel. It was moved downtown in front of the LeRoy Dining

Grill and was located about where the entrance to the drive-thru for McDonald's is today.

Stairway In Steuber's Store 10 Main Street

In 1855 a massive fire destroyed much of the north side of Main Street to Mill Street. Within a year, most of the buildings were rebuilt, including the Upham Block on the corner of Mill Street. This amazing staircase was in the Steuber Store. At some point it was torn out.

